

Common CA Database

Update for CA/Browser Forum F2F 58
February 28, 2023

01

ccadb.org Updates

• 5 Minutes

02

System Feature Updates

• 5 Minutes

03

CCADB Groups

• 3 Minutes

04

Reminders/Coming Soon!

• 2 Minutes

1. ccadb.org Updates



Added...

CCADB Public Group
page



Added...

Submit a Root Inclusion
Request page



Updated...

CCADB Policy page



Added...

CCADB Incident Reports
page

2. System Feature Updates

2.1 Root Inclusion Request


2.1 Root Inclusion Request

Intent: **Simplify**

- CA owner submits **one** Root Inclusion Request case
- Can apply to **multiple** root stores
- Can select **multiple** root CA certificates
- CCADB Root Store Operators process the inclusion request to their store according to their program goals, requirements, and timelines

2.1 Root Inclusion Request

Intent: **Simplify**

 Case
00001215

[Submit to Root Store](#) [Help](#) [Get URLs](#) [Close Now](#)

CA Owner/Certificate Name	Case Record Type	Case Request Status
Sectigo	Root Inclusion Request	CA Providing Data

INSTRUCTIONS [APPLE](#) [GOOGLE CHROME](#) [MOZILLA](#) [CASE PROGRESS](#)

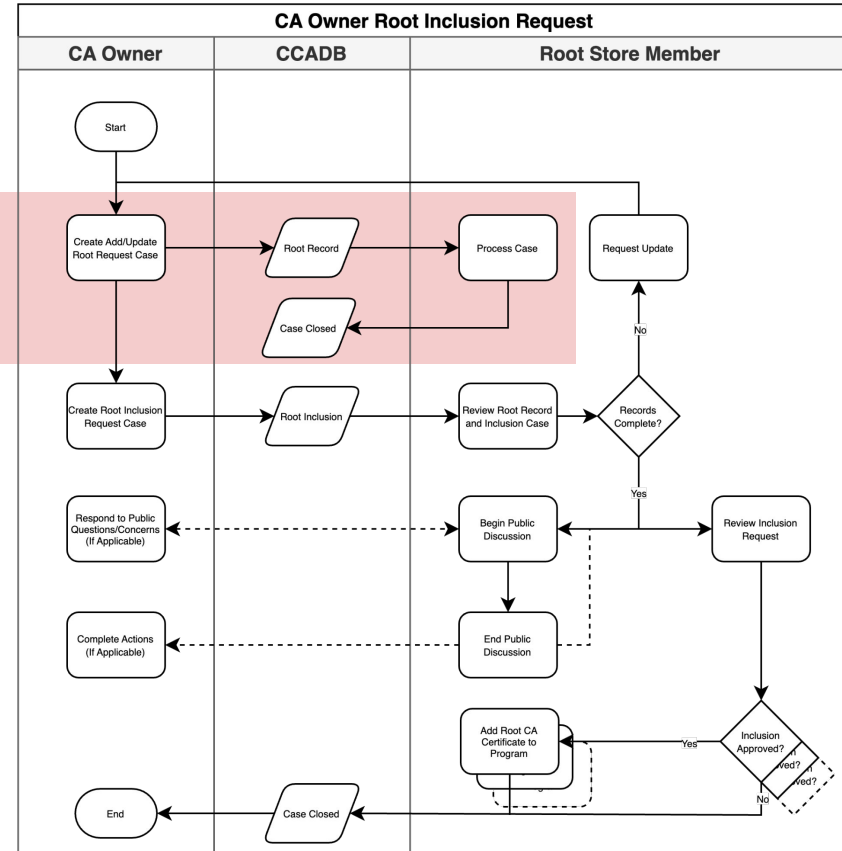
Detailed Instructions: ccadb.org → For CAs → Root Inclusion Request

High Level Summary:

- First make sure that you have completed an 'Add/Update Root Request' for the root certificate(s) that this request is for.
- Click on one of the tabs corresponding to the root store(s) who this request is for.
- Within that tab, click on the 'Add/Select Root Certificates' button, then on the 'Select Root Certificates' button.
- Click on the boxes in the 'Root Store Applying To' column to select certificates.
- After selecting root certificates for this case, go to the applicable root store tabs to fill in the information.
- When you have provided all of the information, click on the 'Submit to Root Store' button.

2.1 Root Inclusion CCADB Process

Add root CA certificate to CCADB
`Add/Update Root Request`



2.1 Add/Update Root Request - Root Information Tab

- > Root CA Background
- > PKI Hierarchy
- > CA CRL
- > Self-Assessment
- > Key Generation

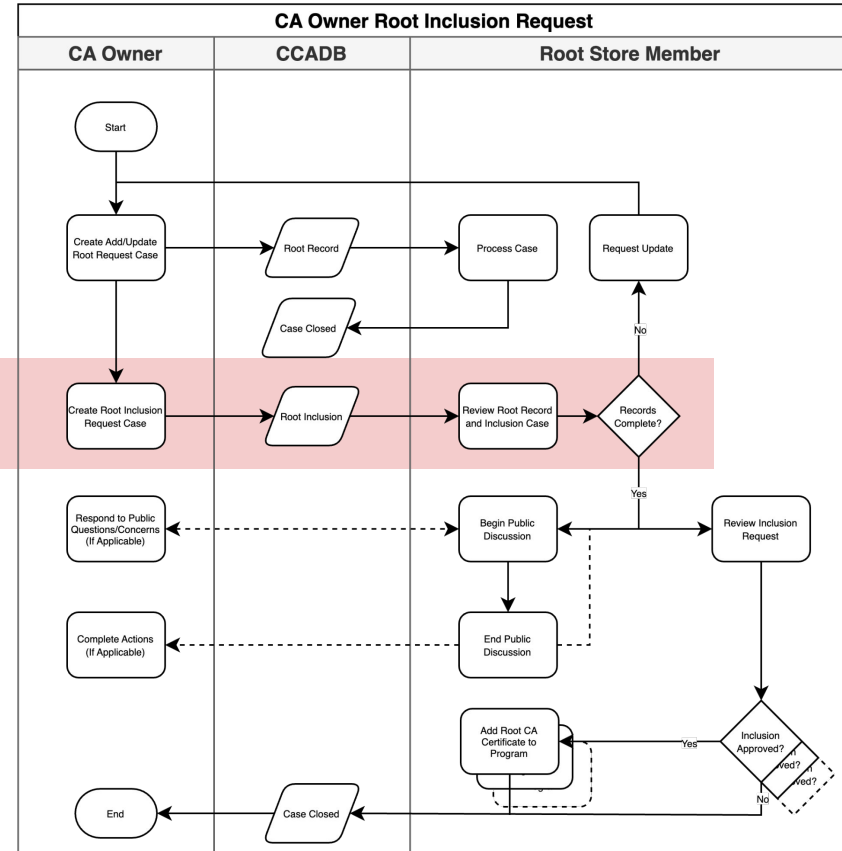


For **existing** root CAs included in all programs

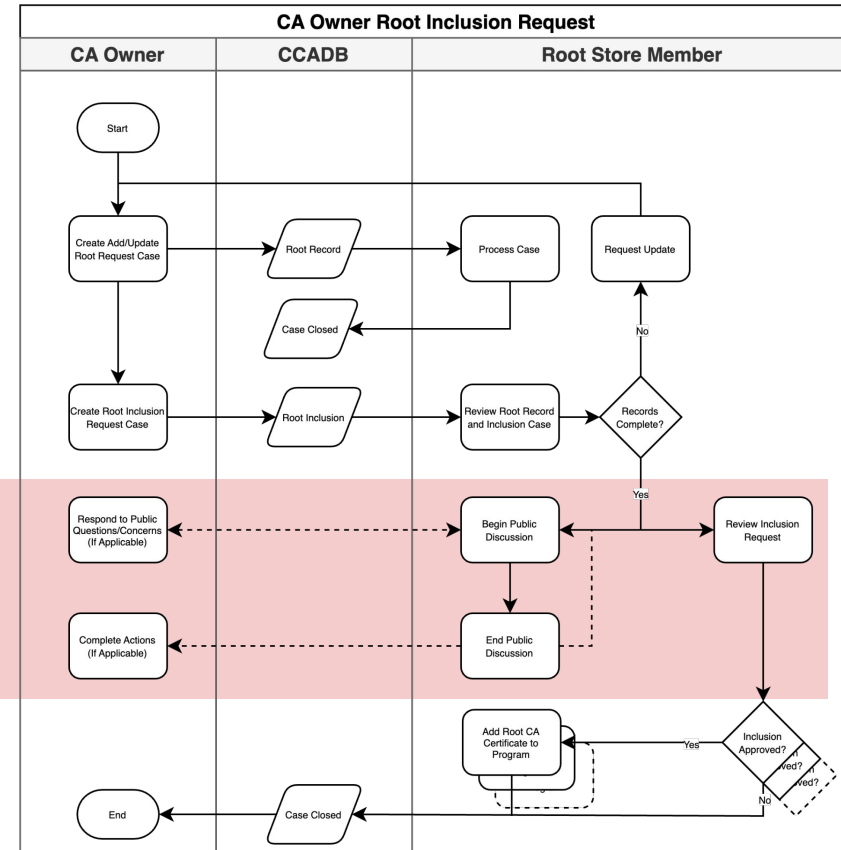
For **new** root CAs requesting inclusion in some programs

2.1 Root Inclusion CCADB Process

Request root CA certificate inclusion
'Root Inclusion Request'



2.1 Root Inclusion CCADB Process



Root inclusion public discussion &
detailed Root Store Operator review
'Root Record' + 'Root Inclusion Case'

3. CCADB Groups

support@ccadb.org

- Continue to utilize for questions/issues regarding a case in the CCADB
- Continue to use for requesting changes to POCs
- CCADB Root Store Operators share responsibility in responding to inquiries

public@ccadb.org

- Valuable as a consolidated space where Root Store Operators share management responsibility
- Code of conduct - be respectful and kind
- For CCADB Root Inclusion Public Discussion, POCs included in CCADB should respond directly to the discussion
- May be used by CCADB SC members to communicate program changes (e.g., policies)

4. Reminders/Coming Soon!

- CCADB Update Dashboard https://wiki.mozilla.org/CA/CCADB_Dashboard
 - ◆ Please continue to file CCADB enhancements, bugs, and API access requests
- CCADB Audit Reminder Email (monthly)
 - ◆ CA Owner task list clean up (CA Home page in CCADB)
- Salesforce transition to Enhanced Domains in CCADB requires URL changes
 - ◆ Communicated via public@ccadb.org
 - CCADB public report links such as those in www.ccadb.org/resources
 - Links to direct pages in the CCADB (e.g., from crt.sh to CCADB)
 - AddUpdateIntermediateCertAPI
 - ◆ Microsoft Office365 with Safe Links protection enabled, please have your system administrator update their whitelist within their Safe Links policy to add:
 - ccadb.my.site.com/*
 - (and remove ccadb.force.com)